



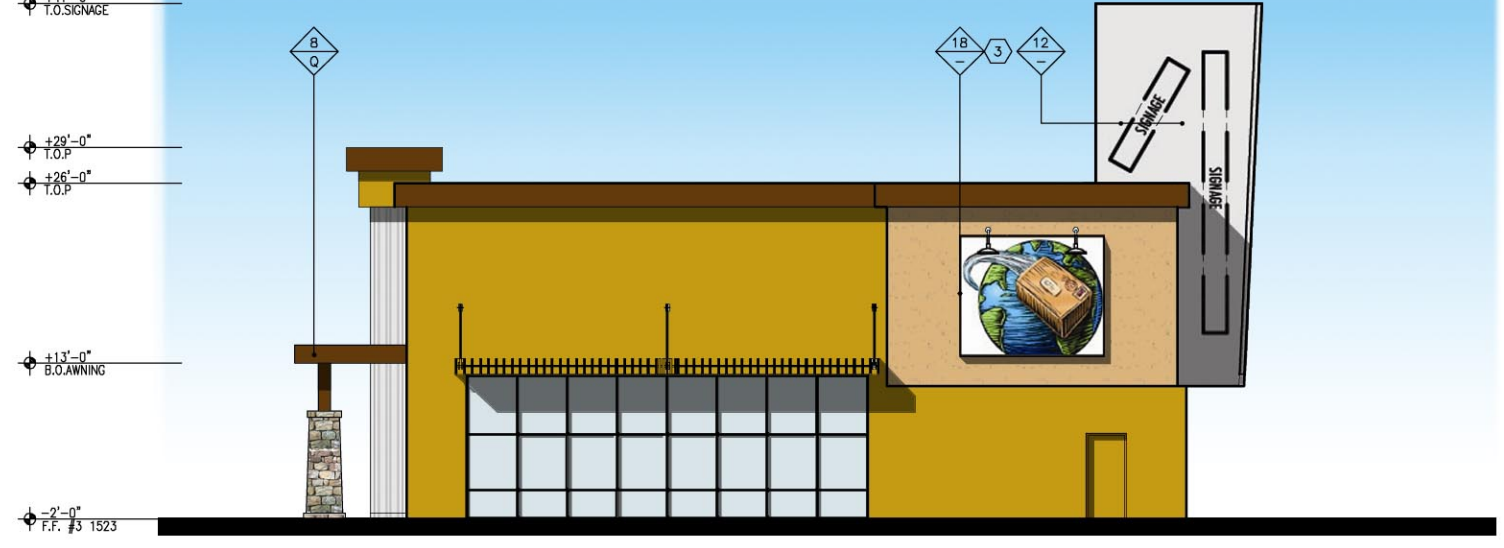
1. WEST ELEVATION



2. NORTH ELEVATION

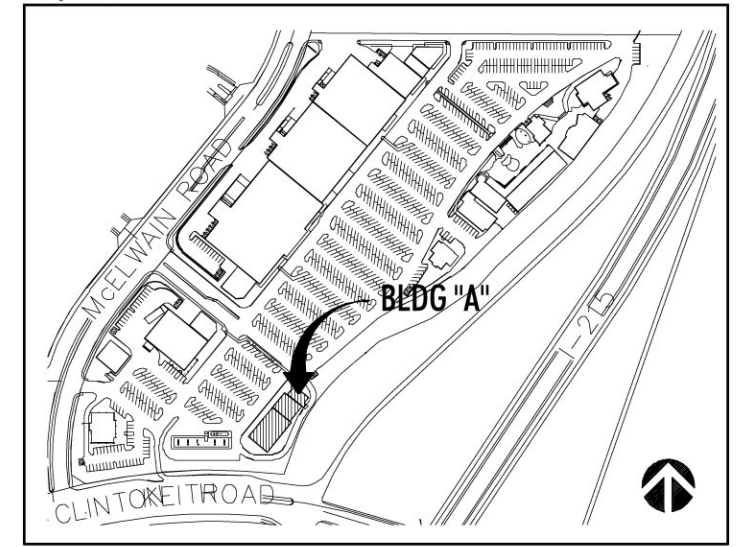


3. EAST ELEVATION



4. SOUTH ELEVATION

| FINISH SCHEDULE | |
|----------------------------------|--|
| FINISH MATERIAL | FINISH COLOR |
| 1 STUCCO | TAYLOR BRICK BLACK |
| 2 BRICK | FRANKLIN BRICK #512-515A |
| 3 GALVANIZED CORRUGATE MTL PANEL | PAD-CLAD FINISH ZINC |
| 4 CORR. VERTICAL PANEL | PAD-CLAD REDWOOD |
| 5 METAL ROOF | PAC-CLAD MUSKET GREY |
| 6 METAL AWNING | PAC-CLAD SANDSTONE |
| 7 STONE | PAC-CLAD ADED COOPER |
| 8 WOOD | NATURAL STONE "NORTH WINDS" |
| 9 METAL PANEL | CAST STONE |
| 10 ALUMINUM STOREFRONT | CLEAR GLASS |
| 11 GLAZING SYSTEM | ICI PAINT #1548 DEEP PURPLE |
| 12 SIGNAGE | ICI PAINT #678 SUNNY SIDE UP |
| 13 SPANDREL WINDOW SYSTEM | ICI PAINT #80YR16/432 ORCHARD PUMPKIN |
| 14 MECHANICAL UNIT BEYOND | ICI PAINT #70Y41/568 ORCHARD HERB |
| 15 KNOX BOX | ICI PAINT #90YR26/530 ORCHARD ORANGE |
| 16 BUILDING ADDRESS | ICI PAINT #1016 WHITE ON WHITE |
| 17 LIGHT FIXTURE | BRUSHED ALUMINUM |
| 18 LIFESTYLE PANEL | FRUITWOOD SW STAIN S64N3 |
| 19 HOLLOW METAL DOOR | ICI PAINT #430 GINGERLY |
| 20 W/ JOIST TYP. | ICI PAINT #1546 NEGATIVE IMAGE |
| 21 SQUARE TUBE STEEL | ICI PAINT #1530 STORM APPROACH |
| 22 OVERFLOW SCUPPER 12X24 | ICI PAINT #70YR31/368 ORCHARD CINNAMON |
| 23 WIND TURBINE ATTIC VENTILATOR | ICI PAINT #586 EGGNOG |
| | ICI PAINT #749 BELLCOURT CASTLE |
| | ICI PAINT #1440 SANCTUARY |
| | ICI PAINT #20Y43/381 ORCHARD OCTOBER |
| | ICI PAINT #853 CHIC YELLOW |
| | ICI PAINT #1533 BYZANTINE BLUE |
| | ICI PAINT #10YR17/295 ORCHARD RED |
| | ICI PAINT #382 COPPER BRIGHT |
| | ICI PAINT #20Y35/456 ORCHARD GOLDEN |
| | ICI PAINT #1528 BLUEBERRY HILL |
| | ICI PAINT #543 MOONSTRUCK |
| | ICI PAINT #873 ALLIGATOR PEAR |



KEY PLAN

THE ORCHARD - STONE CREEK

Murrieta, California

Developed By
Retail Development Advisors



CLARKEWERKS
ARCHITECTURE PLANNING INTERIOR DESIGN
22441 OLD CANAL ROAD YORBA LINDA, CALIFORNIA 92807
Phone: 714 / 282-1790
Fax: 714 / 282-1432

| The Office of Document | |
|------------------------|-----------|
| Project Name | 03.111.01 |
| Project Number | 04.20.04 |
| Date | |

D3.1
BUILDING "A" ELEVATIONS